

Miraco Waterers

Reliable Hydration for Healthy Herds & Profitable Operations

- Built for the Toughest Conditions
- Energy-Free & Heated Options.
- Fast, Easy Clean-Out
- Water Savings by Design
- Industry-Leading Peace of Mind

The Miraco Advantage

Tank's sloped bottoms allow dirt and water to drain completely without the need to remove top cover

Drinking balls roll away completely out of the animal's way for easy drinking because of MiraFount's exclusive roll away design

Center dome removes easily and uses neoprene seals

Dome is sealed air and water-tight

The Miraco Advantage

Drinking balls are durable. Snow and ice do not accumulate, leaving the balls loose for easy use regardless of season

A visible drinking ball means you have adequate water. Great visual at a distance

Freezer testing at -24 degrees

Water line comes through a 4" pipe surrounded by water- which means it can't freeze

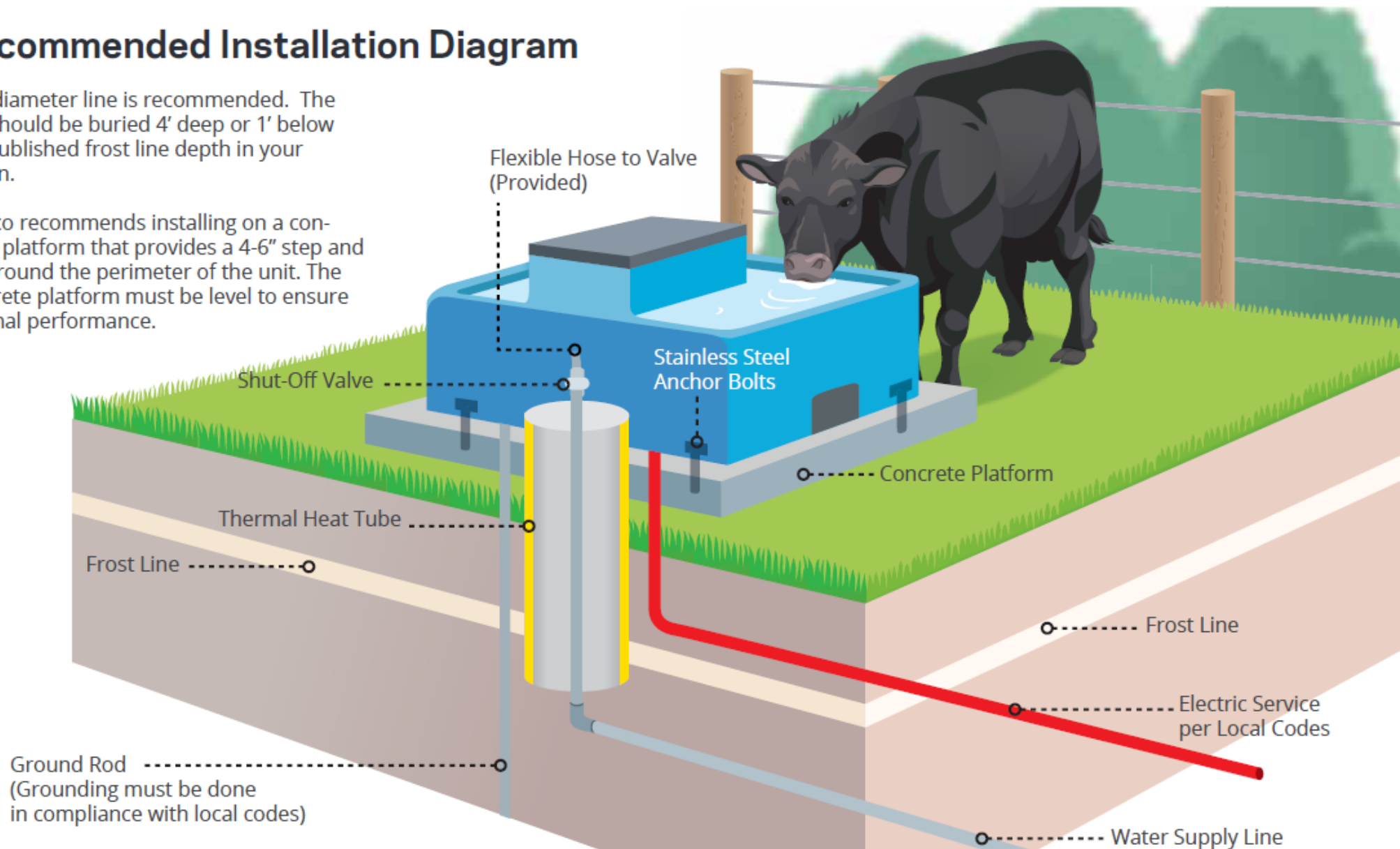
Stainless steel anchors are supplied with every MiraFount tank

No recessed area to collect dirt

Recommended Installation Diagram

A 1" diameter line is recommended. The line should be buried 4' deep or 1' below the published frost line depth in your region.

Miraco recommends installing on a concrete platform that provides a 4-6" step and 18" around the perimeter of the unit. The concrete platform must be level to ensure optimal performance.





MiraFount
Energy Free Waterers

The logo features the brand name 'MiraFount' in a bold, red, sans-serif font. A small blue water droplet is positioned above the letter 'i'. Below the brand name is a white scalloped border, and underneath that is a dark blue horizontal bar containing the tagline 'Energy Free Waterers' in white, sans-serif text.

MiraFount 3330

CAPACITY	50 head beef 25 head dairy
GALLONS	15 (57 liters)
SPECIFICATIONS	One 8.75" opening / 9" ball closure
DIMENSIONS	28" x 26" x 14" (71 x 66 x 35.5 cm)
WEIGHT	59 pounds (27 kg)
DRINKING HEIGHT	14" (35.5 cm)



MiraFount 3345

CAPACITY	75 head beef 30 head dairy
GALLONS	30 (112 liters)
SPECIFICATIONS	One 10” opening (10-3/4” ball)
DIMENSIONS	29” x 31” x 18” (73.6 x 109 x 66 cm)
WEIGHT	95 pounds (43 kg)
DRINKING HEIGHT	18” (66 cm)



MiraFount 3354-S

CAPACITY	200 head beef 90 head dairy
GALLONS	70 (265 liters)
SPECIFICATIONS	Four 9.5" openings / 10.75" ball closures (convertible)
DIMENSIONS	57.5" x 32.5" x 19" (146 x 82 x 48 cm)
WEIGHT	152 pounds (69 kg)
DRINKING HEIGHT	19" (48 cm)



MiraFount 3370-S

CAPACITY	250 head beef 120 head dairy 200 cow/calf units
GALLONS	100 (378 liters)
SPECIFICATIONS	Six 9.5" openings / 10.75" ball closures
DIMENSIONS	57.5" x 45.5" x 20" (146 x 115 x 51 cm)
WEIGHT	216 pounds (98 kg)

DRINKING HEIGHT 20" (51 cm)



MiraFount 3390

CAPACITY	150 head beef 60 head dairy
GALLONS	44 (166.5 liters)
SPECIFICATIONS	Two 10" openings / 10.75" ball closures (convertible)
DIMENSIONS	43" x 29" x 20" (109 x 73.6 x 51 cm)
WEIGHT	126 pounds (57 kg)
DRINKING HEIGHT	20" (51 cm)



MiraFount 3410

CAPACITY	100 head market hogs 50 head sows
GALLONS	6 (23 liters)
SPECIFICATIONS	Two lift-up lids / 10" openings
DIMENSIONS	34" x 19" x 16" tall (86 x 48 x 41 cm)
WEIGHT	52 pounds (24 kg)



MiraFount 3410-4

CAPACITY	200 head market hogs 100 head sows
GALLONS	15 (57 liters)
SPECIFICATIONS	Four lift-up lids / 10" openings
DIMENSIONS	34" x 36.5" x 16" tall (86 x 93 x 41 cm)
WEIGHT	95 pounds (43 kg)



MiraFount 3465

CAPACITY	100 head beef 40 head dairy
GALLONS	20 (75 liters)
SPECIFICATIONS	Two 9.25" openings / 10" ball closures
DIMENSIONS	36" x 24" x 18" (91 x 61 x 46 cm)
WEIGHT	79 pounds (36 kg)
DRINKING HEIGHT	18" (46 cm)

TOP SELLER





E-Fount 3330-E

CAPACITY	50 head beef 25 head dairy
GALLONS	15 (57 liters)
SPECIFICATIONS	One 8.75" opening / 9" ball closure
DIMENSIONS	28" x 26" x 14" tall (71 x 66 x 36 cm)
WEIGHT	57 pounds (26 kg)
HEAT ELEMENT	75 watts
CAPACITY	50 head beef 25 head dairy



E-Fount 3340-E

CAPACITY	100 head sheep
GALLONS	15 (57 liters)
SPECIFICATIONS	Four 6" openings / 7" ball closures
DIMENSIONS	28" x 26" x 14" tall (71 x 66 x 36 cm)
WEIGHT	57 pounds (26 kg)
HEAT ELEMENT	75 watts
CAPACITY	100 head sheep



E-Fount 3345-E

CAPACITY	75 head beef 30 head cattle
GALLONS	30 (112 liters)
SPECIFICATIONS	One 10" opening (removable top)
DIMENSIONS	29" x 31" x 18" tall (73.6 x 109 x 46 cm)
WEIGHT	95 pounds (43 kg)
DRINKING HEIGHT	18" (46 cm)
HEAT ELEMENT	75 watts



E-Fount 3354-E

CAPACITY	200 head beef 90 head dairy
GALLONS	70 (265 liters)
SPECIFICATIONS	Four 9.5" openings / 10.75" ball closures (convertible)
DIMENSIONS	57.5" x 32.5" x 19" (146 x 48 cm)
WEIGHT	152 pounds (69 kg)
DRINKING HEIGHT	19" (48 cm)
HEATING ELEMENT	Two 75 watt heaters



E-Fount 3390-E

CAPACITY	150 head beef 60 head dairy
GALLONS	44 (166 kg)
SPECIFICATIONS	Two 10" openings / 10.75" ball closures; Removable end panels
DIMENSIONS	43" x 29" x 20" tall (109 x 74 x 51 cm)
WEIGHT	129 pounds (58 kg)
HEAT ELEMENT	75 watts



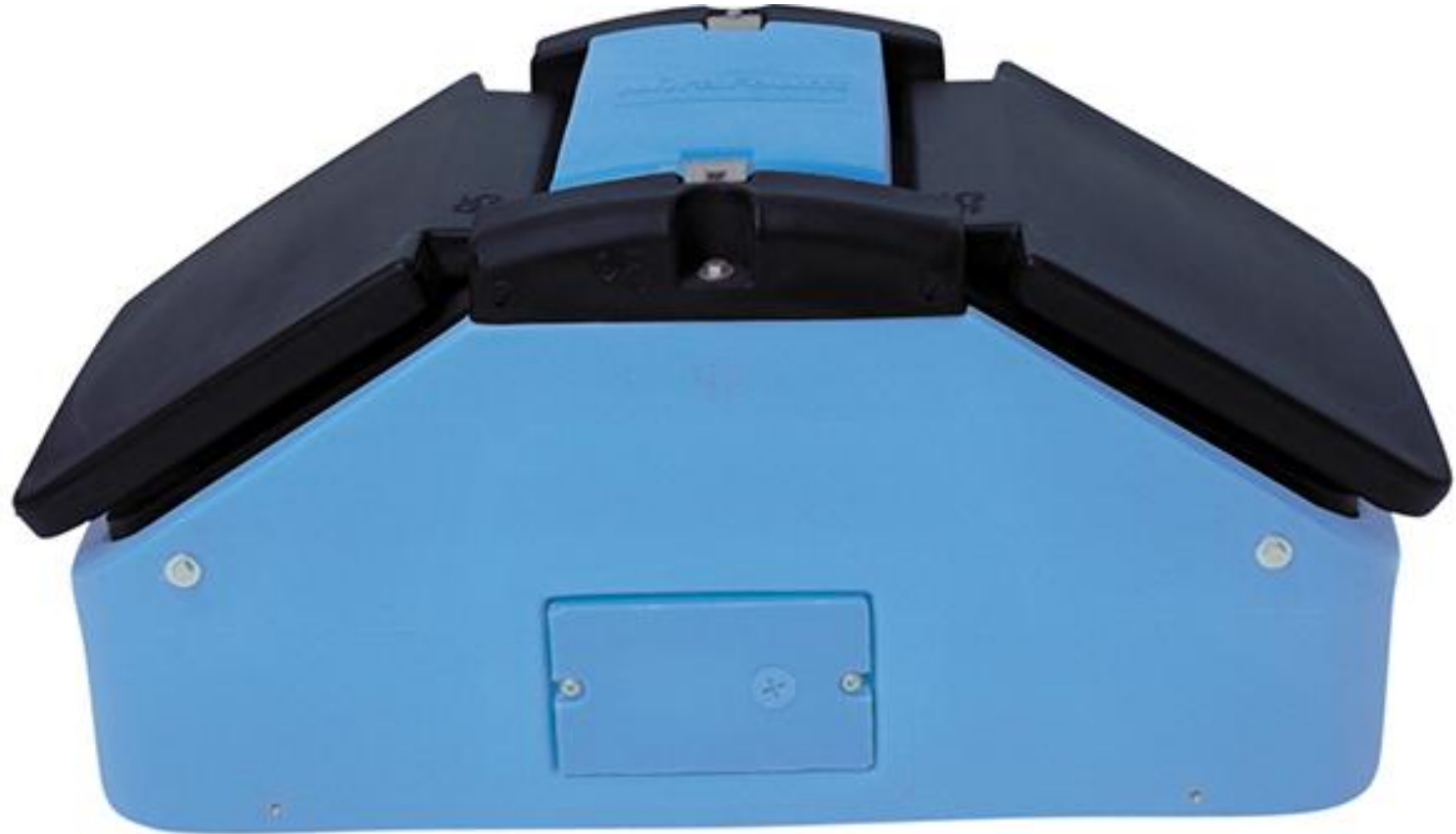
E-Fount 3410-4E

CAPACITY	200 market hogs 100 sows
GALLONS	15 (57 liters)
SPECIFICATIONS	Four lift up lids / 10" openings
DIMENSIONS	34" x 36.5" x 16" tall (86 x 93 x 41 cm)
WEIGHT	98 pounds (45 kg)
HEAT ELEMENT	75 watts



E-Fount 3410-E

CAPACITY	100 market hogs 50 sows
GALLONS	6 (27 liters)
SPECIFICATIONS	Two lift up lids / 10” openings
DIMENSIONS	34” x 19” x 16” tall (86 x 48 x 41 cm)
WEIGHT	57 pounds (26 kg)
HEAT ELEMENT	75 watts



E-Fount 3465-E

CAPACITY	100 head beef 40 head dairy
GALLONS	20 (76 kg)
SPECIFICATIONS	Two 9.5" openings / 10" ball closures
DIMENSIONS	36" x 24" x 18" tall (91 x 61 x 46 cm)
WEIGHT	79 pounds (36 kg)
HEAT ELEMENT	75 watts





Lil **spring**®
Multi-Purpose Waterers

LilSpring 2700

CAPACITY	100 head sheep/goats
GALLONS	6 (22.7 liters)
LENGTH	28.75" (73 cm)
WIDTH	17.5" (44.5 cm)
DRINKING HEIGHT	14" (35.5 cm)
WEIGHT	40 pounds (18.15 kg)
HEAT	Optional 250 watt submersible heater



LilSpring 2800/2801

CAPACITY	30 head beef or horses
GALLONS	4 (15 liters)
DIMENSIONS	20" x 16" x 27" tall (51 x 41 x 69 cm)
DRINKING HEIGHT	19" (48 cm)
VALVE	Miraco automatic plastic
WEIGHT	40 pounds (18 kg)
HEAT	Optional 110 volt 250 watt submersible heater



LilSpring 2900/2901

CAPACITY	60 head beef or horses
GALLONS	6 (23 liters)
DIMENSIONS	30.5" x 16.5" x 27" (77.5 x 40.6 x 69 cm)
DRINKING HEIGHT	19" (48 cm)
VALVE	Miraco automatic plastic
WEIGHT	Miraco automatic plastic
HEAT	Optional 110 volt 250 watt submersible heater



LilSpring 3000/3001

CAPACITY	30 head beef 30 head horses 50 head sheep
GALLONS	5 (19 liters)
DIMENSIONS	24" x 22" x 21" (61 x 56 x 53 cm)
DRINKING HEIGHT	16" (40 cm)
VALVE	Miraco automatic plastic
WEIGHT	48 pounds (22 kg)
HEAT	Optional 110 volt 250 watt submersible heater



LilSpring 3100/3101

TOP SELLER

CAPACITY	100 head beef 50 head dairy
GALLONS	8 (30 liters)
DIMENSIONS	36" x 22" x 27" (91 x 56 x 69 cm)
DRINKING HEIGHT	22" (55.8 cm)
VALVE	Miraco automatic plastic
WEIGHT	75 pounds (34 kg)
HEAT	Optional 110 volt 250 watt submersible heater



LilSpring 3200/3201

CAPACITY	150 head beef 75 head dairy
GALLONS	25 (95 liters)
DIMENSIONS	48" x 24" x 29" (122 x 61 x 74 cm)
DRINKING HEIGHT	24" (61 cm)
VALVE	Miraco automatic plastic
WEIGHT	98 pounds (45 kg)
HEAT	Optional 110 volt 250 watt submersible heater



LilSpring 3500

CAPACITY	225 head beef 110 head dairy
GALLONS	40 (152 liters)
DIMENSIONS	42" x 42" x 26" (107 X 107 X 66 cm)
DRINKING HEIGHT	26" (66 cm)
VALVE	Miraco automatic plastic
WEIGHT	145 pounds (65 kg)
HEAT	Optional 500 watt heater, 110 or 220 volt





Miraco BigSpring 6000/6001

CAPACITY	250 head beef 110 head dairy
GALLONS	60 (227 liters) (up to 30 gallons more than the competition)
LENGTH	90" (229 cm)
WIDTH	33" (84 cm)
DRINKING HEIGHT	24" (61 cm) (2" higher than the competition)
WEIGHT	215 pounds (97 kg)
HEAT	500-watt heater (optional) (110 or 220 volt)



BigSpring 6100/6101

CAPACITY	110 head dairy
GALLON	60 (227 liters)
LENGTH	80" (203 cm)
WIDTH	36" (91 cm)
DRINKING HEIGHT	24" (61 cm)
WEIGHT	205 pounds (93 kg)
HEAT	500 watt heater (optional) (110 or 220 volt)



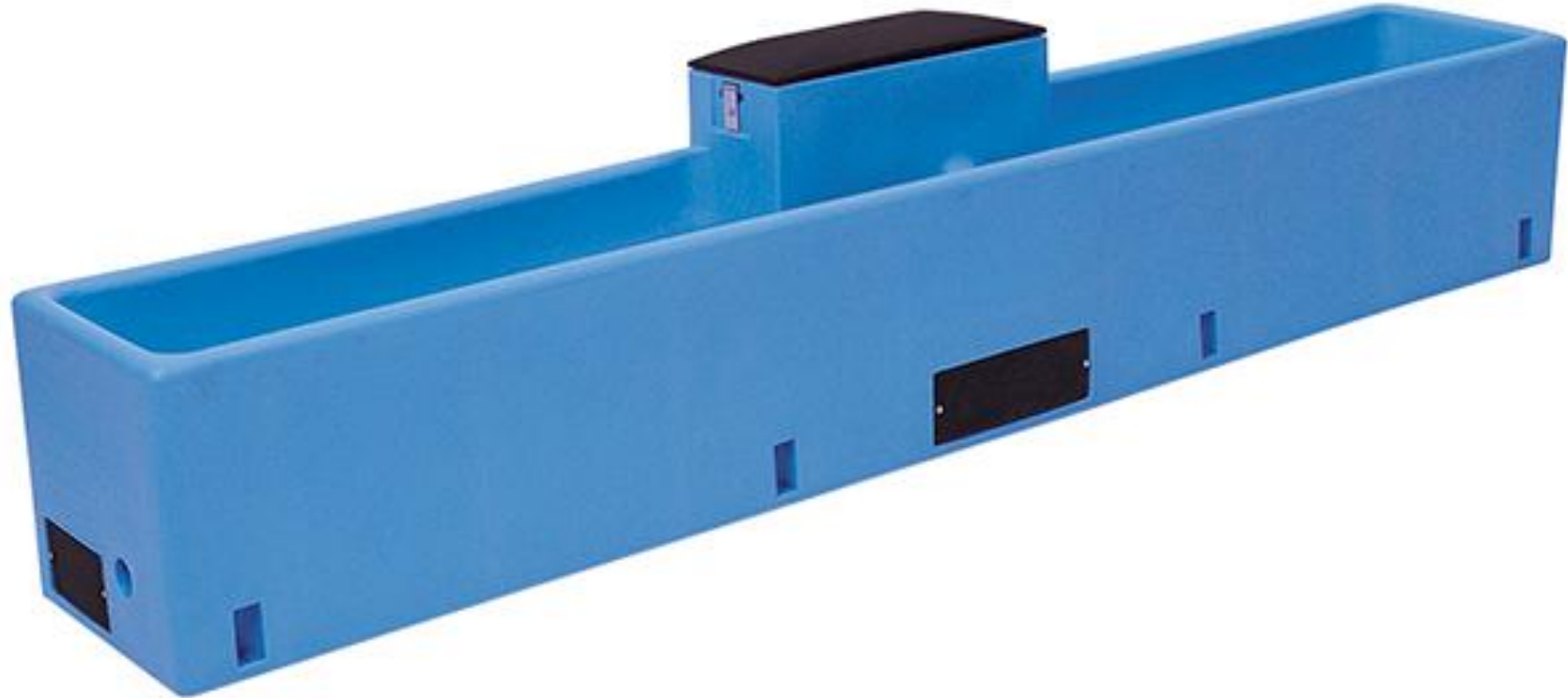
BigSpring 6200/6201

CAPACITY	100 head dairy 200 head beef
GALLONS	60 (227 liters)
LENGTH	84" (213 cm)
WIDTH	22" (56 cm)
DRINKING HEIGHT	22" (56 cm)
WEIGHT	170 pounds (77 kg)
HEAT	500 watt heater (optional) (110 or 220 volt)



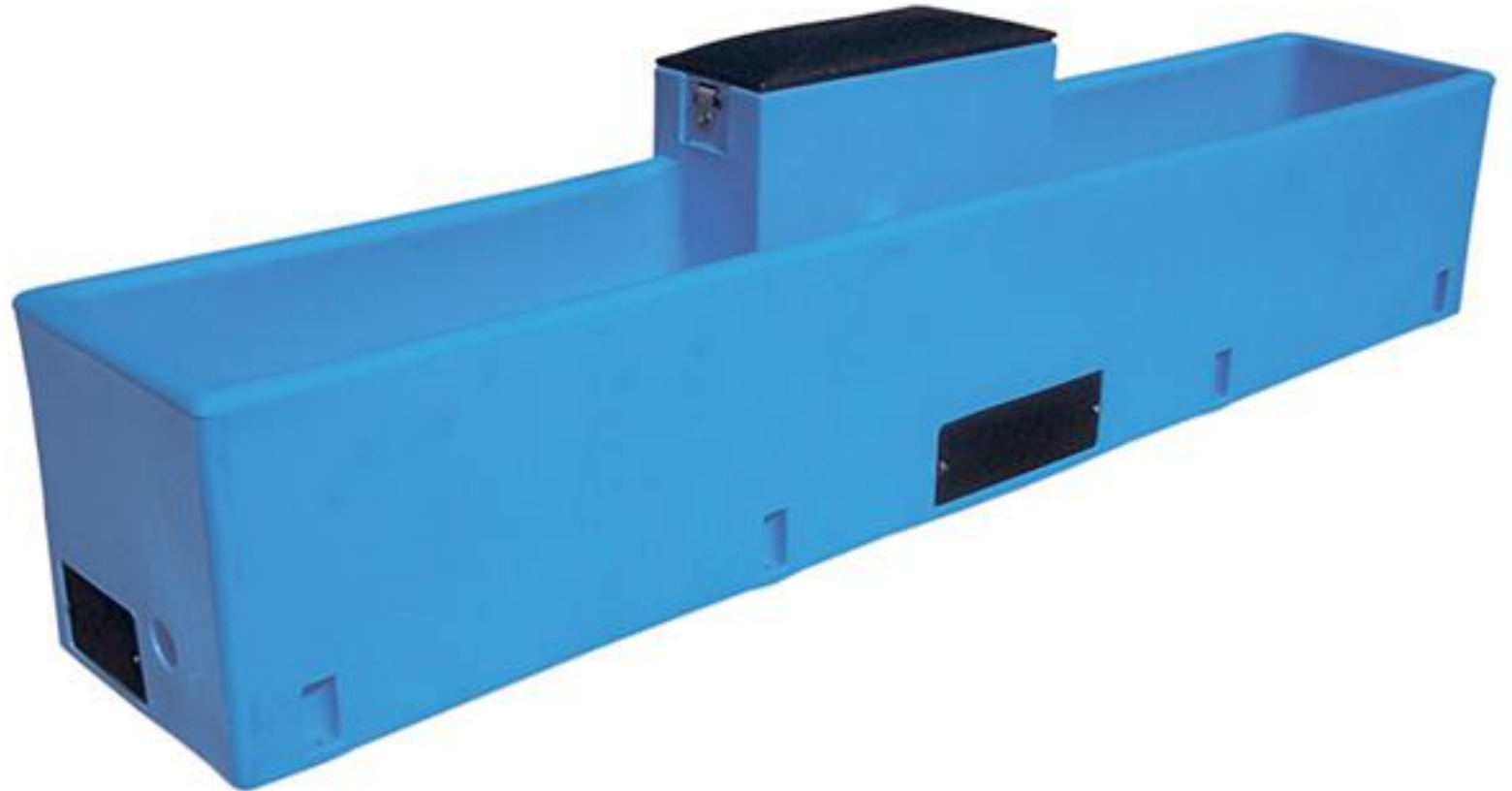
BigSpring 6300/6301

CAPACITY	150 head dairy 300 head beef
GALLONS	110 (416 liters)
LENGTH	144" (366 cm)
WIDTH	22" (56 cm)
DRINKING HEIGHT	22" (56 cm)
WEIGHT	275 pounds (125 kg)
HEIGHT	500 watt heater (optional) (110 or 220 volt)



BigSpring 6400/6401

CAPACITY	125 head dairy 250 head beef
GALLONS	90 (340 liters)
LENGTH	120" (305 cm)
WIDTH	22" (56 cm)
DRINKING HEIGHT	22" (56 cm)
WEIGHT	230 pounds (104 kg)
HEAT	500 watt heater (optional) (110 or 220 volt)



The background of the slide is a close-up photograph of water with numerous bubbles of various sizes. The water is a clear, vibrant blue, and the bubbles are also blue, creating a textured, dynamic effect. The lighting is bright, highlighting the reflections on the water's surface.

EQUIFount[®]

Horse Water Systems

EQUIFount 1100/1101

Corner Mount

DIMENSIONS 16"x 16" x 14"
tall (41 x 41 x 36 cm)

WEIGHT 22 pounds (10 kg)

HEAT Optional 22 watt heater

New Color Options

Gray Blue(Standard)

Black Hunter Green



EQUIFount 1200/1201

Wall Mount

DIMENSIONS 16"x 16" x 14"
tall (41 x 41 x 36 cm)

WEIGHT 22 pounds (10 kg)

HEAT Optional 22 watt heater

New Color Options

Gray Blue(Standard)

Black Hunter Green



834-5 Extension Tube

Cold barns are not a problem for EQUIFount waterers. This insulated extension tube allows water line to enter from below without freezing. Rubber plug can be removed for access to water shut off valve.



The background of the entire page is a high-quality photograph of water. The top half shows the surface of the water with a line of bubbles and ripples. The bottom half shows the water from an underwater perspective, with many bubbles of various sizes rising from the bottom. The color transitions from a light blue at the top to a deeper blue at the bottom.

Lil **fount**

Multi-Purpose Waterers

LilFount Pet and Poultry Waterer

LilFount waterer: For small livestock and pets

The LilFount waterer features all polyethylene construction with polyurethane foam insulation. Its poly exterior makes cleaning a breeze. There's no buildup of bacteria or algae. **The LilFount waterer bowl refills automatically** with no moving parts. Nothing cools off a hot animal faster than cool, clean water to drink. During hot weather, add ice cubes to the 5-gallon insulated reservoir with every fill.



Accessories

Underground Shut-Off Kit

Part No. #399-5 with Drain Back



834 Insulated Heat Tubes

Highly insulated tube shields incoming ground water from cold as it passes through the frost level. Polyethylene construction ensures years of trouble-free use. One 30-inch tube and 3 feet of 12-inch plastic drainage tile provides a sufficient heat well in most locations. For northern locations, two 30-inch heat tubes may be required.



Outside Dimensions	14" X 30" (36 x 76 cm)
Weight	2" Insulation (5 cm)

Heaters

Available in 120 Volt or 240 Volt
250 Watts and 500 Watts

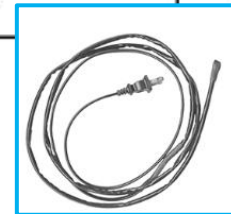
HighLimit safety fuse

Teflon coated aluminum

New thermostat technology

Design allows heater to set 1/2" above the bottom for better heat dispersion.

Part No.	
#543 with built-in thermostat	250 Watt Immersion Heater
#543-5	500 Watt Immersion Heater (110 Volt or 220 Volt)
#919-5	Thermostat Controlled Cable Line Heater (110 Volt or 220 Volt)



Accessories

Hookup Kits



Part No. #158 2' rubber hose (200 psi) with shut off valve.

Automatic Valves



Part No	GPM	Pressure
#336	14	Low 5 – 40 psi
#521	12.5	High 40 – 80 psi
#519	6	High 80 – 90 psi

